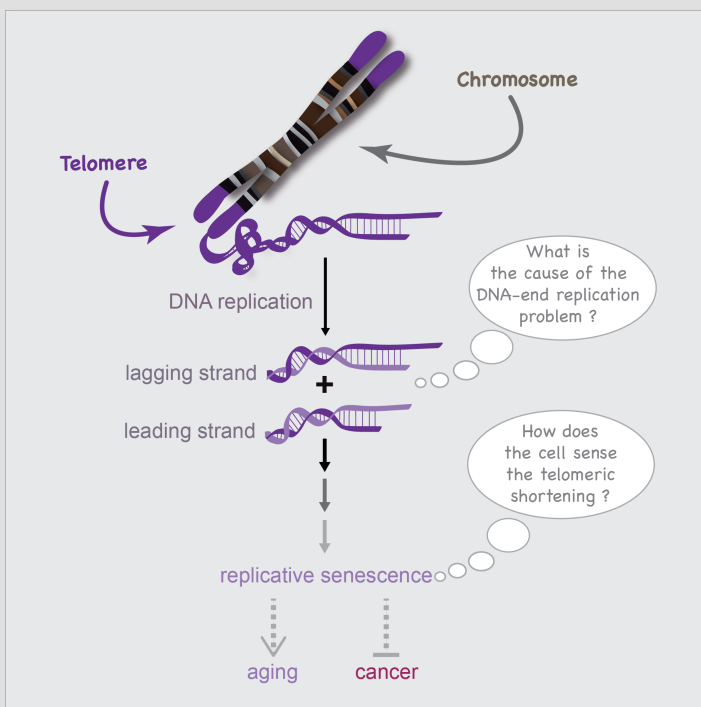


Post-Doc position in Telomere Biology

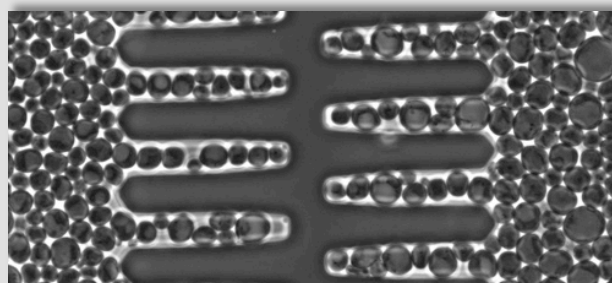


You are invited to apply for a Postdoctoral position in the research team of Dr Maria Teresa Teixeira to undertake an FRM-funded project to investigate telomere replication.

Current projects in the team target the comprehensive dissection of the pathways causing replicative senescence induced by telomere length erosion and the understanding of their impact on proliferative potential for a given cell. We develop genetic and cellular systems that we combine with genome-wide approaches and new imaging tools. We use yeast *Saccharomyces cerevisiae* as our main experimental model.

We are seeking a highly-motivated candidate with a PhD in any area of Molecular Biology or Molecular Genetics. Experience in the analysis of nucleic acids, DNA replication, DNA repair or DNA damage response will be greatly appreciated, together with a multidisciplinary background. The successful candidate should be an enthusiastic scientist, a good team-worker and have demonstrated exceptional potential.

The Centre National de la Recherche Scientifique (National Center for Scientific Research, CNRS) is a public organization under the responsibility of the French Ministry of Higher Education and Research. CNRS laboratories (or research units) are located throughout France, and employ a large body of tenured researchers, engineers, and support staff. Our laboratory is part of a research unit which is partnered with the Université Pierre et Marie Curie, a major french university. It is located in the "Institut de Biologie Physico-Chimique" which is a historic multidisciplinary institute embedded in a highly dense research campus in the center of Paris providing interactions with many experts in the field and at the interface with Physics and Mathematics.



Candidates should send a CV, a letter of motivation and the names of three references to teresa.teixeira@ibpc.fr before August 25, 2016
Other details : <http://www.lbmce.ibpc.fr/en/telomere-biology-823.htm>